

The Tulsa Oil Drop

Special Edition
VOLUME 65
JUNE 2017

Published by the Desk and Derrick Club of Tulsa
www.tulsadandd.net

Editor: Kay Williams

SPECIAL EDITION!

2017 REGION VI MEETING REVIEW



The Countdown:

Four.... *(Months of planning)*

Three.... *(Events)*

Two.... *(Field Trips)*

One.... *(Certification Class)*

BLAST OFF!

To Education And FUN!

Inside this issue:

Index – SPECIAL EDITION	1
The Host Club	2
The Planning	3-5
The Events	6-12
The Field Trips	13-18
The Certification	19
The Ice Breaker	20
The Education	21-22
The Fun	23-24
SPOTLIGHT	25
IN APPRECIATION	26-28
In Loving Memory	29

Greater Knowledge



Greater Service





THE HOST CLUB



Front Row: Beth Hesling, Vicki Barnes

Second Row: Gay Wheeler, Beth Johnson, Gaye Marrs,
Betty Hodge, Pam Sanders, Jonathan Slay

Back Row: Dorothy Lenhart, Val Bode, Karen Chism,
Marilyn Trout, Kay Williams, Jill Klein



FOUR Months of PLANNING



TULSA IS HOSTING 2017 REGION VI MEETING April 27-30, 2017

Current Committee Chairs:

GAC	Jonathan Slay
Recording Secretary	OPEN
Finance	Jill Klein
House	Jonathan Slay
Program/Reg. Packets	Gay Wheeler (committee: Vicki)
Publicity	OPEN
Hospitality	Dorothy Lenhart (committee: Val, Kris, Beth H, Beth J)
Registration	Val Bode (committee: Kris, Pam, Kay)
Entertainment	Marilyn Trout (committee: Gaye, Kathy)
Printing	Vicki Barnes
Field Trips	Beth Johnson
Sponsorships	Kay Williams/Vicki Barnes (committee: Val Bode)

We need **VOLUNTEERS** to help make this Region meeting a success. Please contact the Chairman listed above for the committee on which you would like to chair or serve.

Come help us share Tulsa's great Oil and Gas History!



62nd Annual Region VI Meeting Hosted by the Desk and Derrick Club of Tulsa April 27-30, 2017

Region VI Director Wendy Sparks and the members of Desk and Derrick Club of Tulsa proudly extend an invitation to each of you to join us for the **62nd Annual Region VI Meeting** held April 27th through April 30th in Tulsa, Oklahoma. We will gather at a relaxing, peaceful venue at the POSTOAK Lodge and Retreat.



The Region VI Meeting will be filled with excitement and many aspects you will never forget. Attendees can gain knowledge through a Geology Certification Seminar and will hear from two interesting speakers on Saturday.

Registration, hospitality and hotel check-in will be available from 4:00 P.M. – 6:30 P.M. on Thursday, April 27th. Zipline tours are available daily and can be arranged by calling Postoak's front desk at (918) 425-2112. On Thursday evening, we will gather and enjoy a dutch treat meal at The Rusty Crane restaurant in downtown Tulsa. Friday field trips have been scheduled to visit: (1) Osage Windmill Farm with a stop for lunch at Grill 125 and shopping at The Pioneer Woman Mercantile in Pawhuska or (2) Grand River Dam Authority Pensacola Dam with a stop for lunch at an Amish farm in Choteau. Friday evening will be a fun-filled Social at the Lodge. We plan to offer BBQ dinner, human foosball, volleyball, bonfire and a cash bar.

The entire Registration Packet, including a printable Registration Form, can be found [here](#). For your convenience, *Club Members can register and pay online [here](#), or click [here](#) for guest registration.* Registration fee includes the Friday evening Social, the Saturday Industry Appreciation Luncheon, the Awards Banquet, as well as snacks. This packet contains hotel information and more details about all the activities.



The hotel accommodations are at POSTOAK Lodge and Retreat, 5323 W. 31st Street North, Tulsa, Oklahoma. (918) 425-2112. The Lodge is set on 1,000 wooded acres and located 5.7 miles north of downtown Tulsa. Hotel-style room options include either one queen bed or two double beds for the cost of \$109 per night (plus tax). Rooms hold up to 2 guests and include a refrigerator and microwave in the common area. This rate includes two continental breakfasts per room. Be sure to ask for the Desk and Derrick Club of Tulsa rate when making your reservation.

February 1, 2017

RE: Sponsorship Opportunities – 62nd Annual Region VI Meeting
Desk and Derrick Club of Tulsa

Dear Sir/Madam,

Celebrating 65 years of service to our members and industry, the Association of Desk and Derrick Clubs (ADDC) is a dynamic organization and an industry leader in promoting education of the petroleum, energy, and allied industries. ADDC is a major contributor of energy education through informative programs, on-site field trips, workshops, seminars, and teaching publications.

Serving nearly 2,500 individuals employed in or affiliated with the petroleum, energy, and allied industries, ADDC is comprised of 51 clubs within 7 regions throughout the United States and Canada. Desk and Derrick Club of Tulsa is in Region VI and serves members in Oklahoma and Kansas.

Membership in a club is granted to individuals interested in increasing their knowledge about these industries. Our mission is to enhance and foster a positive image to the global community by promoting the contribution of the petroleum, energy, and allied industries through education by using all resources available. Our motto is "Greater Knowledge – Greater Service".

Desk and Derrick Club of Tulsa will host our 62nd Annual Region VI Meeting April 27-April 30, 2017 at POSTOAK Lodge & Retreat located at 5323 W 31st St North, Tulsa. This event will offer Certification Programs, Field Trips, Networking, Leadership and Team Building that will support various aspects of the oil and gas and allied industries. The Club is striving to make this event an outstanding educational opportunity for all attendees.

We are seeking sponsorships for this year's Region VI Meeting, and hope that you will consider a contribution*. We are offering several sponsorship levels listed on the Sponsorship Form. However, any donation will be greatly appreciated, including company logo items for registration bags.

On behalf of all our members, thank you for considering sponsorship of the 62nd Annual Region VI Meeting.

Sincerely,
2017 Region VI Sponsorship Co-Chairmen

Kay Williams
Ph: 918-810-0913
email: kwilliams@rimrockresource.com

Vicki Barnes
Ph: 918-858-5173
email: vbarnes@laredopetro.com

*Desk and Derrick Club of Tulsa is a non-profit organization under IRS Code 501(c)(6). For more information about our Club and/or Organization, please visit our websites at:

www.tulsadandd.net

www.addc.org

Our Values
Integrity/Accountability | Leadership | Professionalism | Teamwork



Committee: Program
Chairman: Gay Wheeler

Report: Items still needed for program: Bio and photo of person doing Tulsa welcome; Boy Scout Troop #; names of ADDC Officers & Committee Chairs, past Region VI Directors, first timers that will be in attendance (after registration closes); confirm Photography Schedule; acknowledgements of sponsors and volunteers. See attached sheet for what I have on volunteers so far.

Committee: Field Trip
Chairman: Beth Johnson

Report: Gay Wheeler and Kay's husband will be the 2 drivers for the Osage Wind Farm. I still need 1 or 2 drivers for Pensacola Dam tour, depending on how many people sign up. When we get final numbers I will follow up with tour guides and lunch places with final numbers.

Beth Hesling, Gay Wheeler and I drove the route in Feb. and verified times I had estimated. Also attached is a spreadsheet with detail about each field trip. I have made a word search game with D&D terms we will hand out on the vans.



ADDc

62nd Annual Region VI
Meeting

Association of **DESK** and **DERRICK** Clubs

Tulsa, Oklahoma
April 27, 2017 – April 30, 2017

Hosted by the Desk and Derrick Club of Tulsa

Committee: Hospitality
Chairman: Dorothy Lenhart

Report: A list of items needed was drafted and sent to the hospitality committee, including paper goods, beverages, individual snacks, breakfast-type items and fruit to stock the Hospitality Room. Some of the committee members have also volunteered to bring some homemade items for our guests, and to help with the shopping.

Our contact at the Post Oak Lodge confirmed that only water and coffee would be provided in the main lodge where the meetings would be held. Our contract does not include any snack break items, and no outside food/drinks are allowed in the main lodge area. Attendees will be able to visit the Hospitality Room in the Lodge #1 kitchen upon arrival or in between meetings and activities to grab a quick snack and beverage and mingle.

Committee: Sponsorship
Co-Chairmen: Kay Williams & Vicki Barnes

Report: To date, the Sponsorship Committee has sent approx. 65 sponsorship letters and forms to companies and individuals. This does not include the copies sent to all Tulsa Club members, requesting that they submit them to the appropriate person within their respective companies. We still have 20 companies/names which we continue to research for contact information.

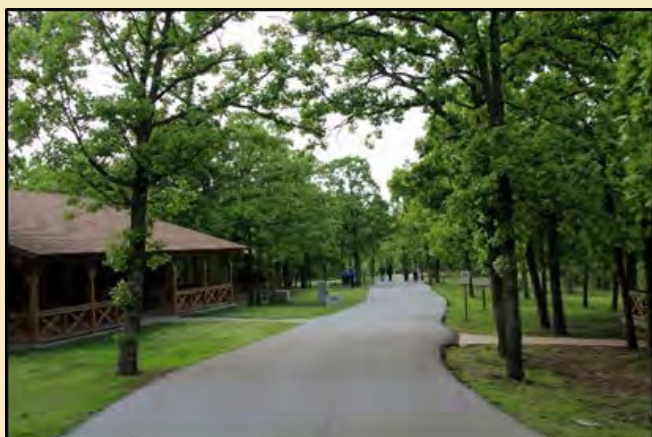
On March 15-16th, we sent deadline reminders by emails.

REGION VI MEETING APPOINTMENTS

Secretary	Anna Lewis-McBeth, Oklahoma City
Treasurer	Jamie Sabata, Liberal
Parliamentarian	Abby Johnson, Butler County
General Arrangements Chairman	Jonathan Slay, Tulsa
Time Keeper	Kelly Rains, Wichita
Registrar	Tammy Garth, Liberal
Contest Region Representative	Casi Nichols, Enid
Nominating Chairman	Tammy Watkins, Enid
Scrapbook	Casi Nichols, Enid
Song Leader	Kay McKinley, Liberal
Memorium	Connie Price, Oklahoma City



THE VENUE





62nd Annual Region VI Meeting
Industry Luncheon
Saturday, April 29, 2017

Menu
House Salad
Citrus Grilled Chicken
w/ Pineapple Mango Pico de Gallo
Steamed Jasmine Rice
Strawberry Shortcake OR Chocolate Mousse

Call to Order	Wendy Sparks
Introductions	Region VI Director
Invocation	Abby Bock Wichita President
Toastmaster	Pam Hitz Great Bend President
~ Lunch ~	
Introduction of Speaker	Kay Williams Tulsa Club
Keynote Speaker	Michael Evans Rimrock Resource Opriz
Special Presentation	Wendy Sparks Region VI Director
2018 Convention Report	Sharon Funk Butler County Club
Announcements	Jonathan Slay Tulsa President & GAC

T H E M E N U



62nd Annual Region VI Meeting
Awards Banquet
Saturday, April 29, 2017

Menu
Cassie Salad
Rosemary and Garlic Roasted Pork loin
w/ Madera Mushroom Sauce
Herb Roasted Potatoes
Chocolate Mousse Cake OR Key Lime Pie

Call to Order	Wendy Sparks
Introductions	Region VI Director
Invocation	Margaret Downie Oklahoma City Member
~ Dinner ~	
Introduction of Entertainment	Jonathan Slay Tulsa President & GAC
Traditional Orange Stringed Dance performed by Stephen Sisk with introduction by Marjorie Sisk	
2019 Convention Report	Anna Lewis-McBeth 2019 Convention GAC
Introduction of Speaker	Jackie Shaver Red Earth President
Keynote Speaker	Christina Forth 2017 ADDC President Elect
A.I.M.E.E. Awards Presentation	Cass Nichols Contest Region Rep.
Membership Certificates	Wendy Sparks Region VI Director
Scrapbook Presentation	Anna Lewis-McBeth Scrapbook
2016 Region VI Director's Gift	Linda Gau Enid Member
Special Presentation Recognition of Host Club & Passing the Gavel	Wendy Sparks Region VI Director
Announcements	Jonathan Slay Tulsa President & GAC
Benediction	Tara Woods Oklahoma City Member



THREE EVENTS



(1) Friday Night Social

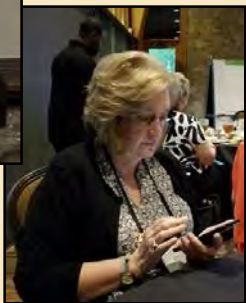


BBQ & GAMES





(2) Saturday
Industry Luncheon







(3) Saturday Awards Banquet



Entertainment by Stephen Sisk



Passing the Gavel
2017 RD Wendy Sparks
to 2018 RD Casi Nichols



A
I
M
E
E

A
W
A
R
D
S



Achievement In
Maintaining
Energy Excellence





Best Large Bulletin

(1st Place)

The Tulsa Oil Drop
June 2016
Editor - Kay Williams



Best Industry Article

(2nd Place)

Fractured - The Movie
July 2016
Author - Jonathan Slay



Best President's Letter

(1st Place)

April 2016
Author - Karen Gibbs (Hollis)



THE AIMEE AWARDS (Tulsa Winners)



Best Desk and Derrick Program

(1st Place)

Greater Knowledge- Greater Service
March 2016
Speaker - Karen Gibbs (Hollis)
Coordinator(s) - Jill Klein, Dorothy Lenhart
Author - Kathy Farris

Best Industry Field Trip

(2nd Place)

Tallgrass Prairie Preserve Pawhuska, OK
October 2016
Speaker Jim Derby - Geologist/Docent
Coordinator(s) - Vicki Barnes, Jill Klein, Betty Hodge
Author - Karen Chism



Best Industry Photograph

(2nd Place)

McDonald Tank Farm
Great Bend, KS
April 2016
Photographer - Gay Wheeler



Thank You Gift
presentation to
GAC - Jonathan Slay
by 2017 Region Director,
Wendy Sparks



Gaye Wheeler - 35 years

TULSA
S
E
R
V
I
C
E
A
W
A
R
D
S



Beth Hesling - 35 years



Kay Williams - 10 years



Jill Klein - 5 years



Dorothy Lenhart - 5 years

Not pictured:

Joyce Kunkel - 50 years, Barbara Rasmussen - 20 years,
Dorthie Parker - 5 years, Pam Sanders - 5 years



TWO FIELD TRIPS

(1) OSAGE WIND FARM AND PIONEER WOMAN MERCANTILE

Enel Green Power operates the Osage wind farm. During the tour, we learned that 90% of the farm's generated power is sold to Oklahoma customers. Windmills require a lot of maintenance. Components in the hub (nose) require lubrication while bearings and electrical parts may require frequent replacement due to overheating. Operators climb ladders inside the windmills with safety harnesses and even walk on top of the nose! Fear of heights, anyone?

To install a windmill, two cranes work together to hoist the hub and blades, helping a crew assemble a unit in only three hours. Power from the area's electric grid is required to start up the windmill each time sensors sense that wind speed is above 5 mph and can sustain the windmill by wind only. Many people are unaware that windmills use a substantial amount of electric energy to start up many times per day, and that they kill many large predator birds, disrupting the food chain. In a tornado or high winds, the blades and swivel (pitch) back 90 degrees to let the wind go by to prevent spinning the blades faster than they are designed to spin.

Windmills are big business, at \$2-3 million dollars of capital costs for each windmill, plus the substation and parts inventory and a few full-time staff. Land owners who can deal with the squeaking and whooshing sounds can enjoy earning \$1,000/month per turbine on their property, or about \$1.0 million dollars per year in lease revenue from the 84 turbines on this one farm. Of particular interest to an entrepreneur or accountant is there are two types of lease arrangements for the land: fixed payments like \$1,000/month, or a variable profit-sharing arrangement based on volume of kilowatts generated.

Our tour guide also discussed some of the technical engineering of the windmills. The most expensive part, the six frequency converters, can act like a high speed switch, cycling the generated current on and off 20,000 times per second to form a perfect 1200rpm or 60hz sine wave that is needed to send usable current to the transformer station. Amazingly, one windmill can generate 50,000 kW, or enough to power 600 homes. The 84 windmills on this relatively small farm can power 50,000 homes. We learned that the electric power generated is very inconsistent due to the nature of changing wind speed, unlike the consistent energy source from an oil well. To optimize the wind available, the computer software in these General Electric windmills can automatically turn and point the nose into the wind when wind changes direction.

The tour concluded by looking inside a windmill and standing below it as it started up. It was rather scary seeing an enormous blade swing down towards me, but it made a thrilling whooshing sound. Our field trip's participants greatly increased our appreciation for alternative forms of energy. ~ Jonathan Slay





The Energy Industry is undergoing more changes than ever and Wind Technology is quickly becoming a bigger part of the industry. It was great to see the wind turbines up close and learn more about this part of the industry. The most eye opening part for me was seeing how few personnel are needed to maintain a facility. ~Jake Sherman



Being my second trip to a Wind Farm, this was the first time to be able to get up close to the wind turbine. Fascinating to view it from the inside looking up. I sure wouldn't want to be one whom has to climb all of the stairs to get to the top. I also thought it was neat that we could see a wind turbine and right next to it a pump jack and cows. ~ Marilyn Trout



LUNCH & THE MERCANTILE

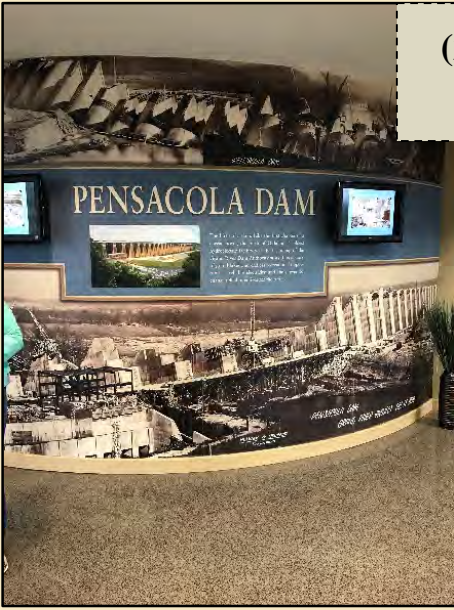




(2) GRDA PENSACOLA DAM AND AMISH LUNCH

Here are a couple of interesting facts I learned about the Pensacola Dam. Pensacola Dam was built in 20 months from December 1938 to August 1940. President Franklin Roosevelt approved \$20 million in funding for the construction. When water levels exceed or are anticipated to exceed the target water levels, the Corps of Engineers take control from the Grand River Dam Authority and determine how much water is released through the floodgates.

~ Beth Johnson





Their new facility was very impressive to walk through (inside and out) and the tour guide was well-informed about the amount of energy produced through the dam and the history of it. I hope to take my family there someday, and follow up with a lunch at the Miller's farm. The best food I've ever had...sorry grandma!

~ Dorothy Lenhart



I was glad the lake level was high and we could see the water flowing. The GRDA visitor center was very nice, After Memorial Day they will be open to the public, in the winter you can only book private tours. The most amazing to me was seeing the giant generators powered by the water that have been running continuously since 1942. And I absolutely loved the architecture of the dam with 51 arches! Immediately after taking my seat at the Amish Farm I was passed a tray of hot homemade rolls, everything was extremely delicious. Luckily the weather was good when we got back to POL because we had to walk some of it off.

~ Jill Klein



The field trip to the Pensacola Dam and the Amish House was great! I loved getting to know the D&D members on the van ride. Our guide was very knowledgeable about the history of the building of the dam and how it worked. The hydroelectric inner workings below the dam were fascinating. I do not know how many times I have crossed that bridge never realizing what was below or how the dam worked! Of course, the lunch at the Amish House was out of this world! This field trip was well worth the time and money spent to visit! ~ Karen Chism



LUNCH AT THE AMISH HOUSE





ONE CERTIFICATION

Region VI Meeting
Tulsa, Oklahoma
April 27-30, 2017



62nd Annual Region VI Meeting held April 27th through April 30th in Tulsa, Oklahoma. We will gather at a relaxing, peaceful venue at the Postoak Lodge. The Lodge is set on 1,000 wooded acres and located 5.7 miles north of downtown Tulsa. Friday evening will be a fun-filled Social at the Lodge. We plan to offer BBQ dinner, human foosball, volleyball, bonfire and a cash bar.

A Geology Certification Seminar will be offered and led by Dr. Norman Hyne.



And you will hear from two interesting speakers on Saturday.



GRDA Pensacola Dam with a stop for lunch at an Amish farm in Choteau.

Choose a Fall Trip

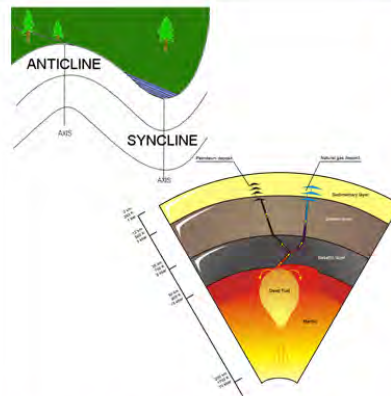


Osage Windmill Farm with a stop for lunch at Grill 125 and shopping at The Pioneer Woman Mercantile in Pawhuska.



How to Register:
View the Registration Packet and mail in the forms, or register online (NEW). See our Special Events page. <http://www.tulsadadcd.net/special-events/>.

GEOLOGY CERTIFICATION



Geology – the study of the history of the earth especially in regards to rocks

Geology is one of the most important aspects in the exploration of oil and gas.

Become a more knowledgeable petroleum industry employee - learn more about geology.

Members:

\$75.00

Non Members:

\$75.00

THURSDAY, APRIL 27 2017 ADDC REGION VI CERTIFICATION PROGRAM

The Association of Desk and Derrick Clubs of Region VI are proud to offer the 2017 certification program covering the subject of geology. This year's program will be presented by Dr. Norman Hyne, professor of Petroleum Geology at University of Tulsa. Class will be held from 9am - 4pm. Lunch Provided. Post Oak Lodge, Oak Room.

GREATER KNOWLEDGE
- GREATER SERVICE



Dr. Norm Hyne



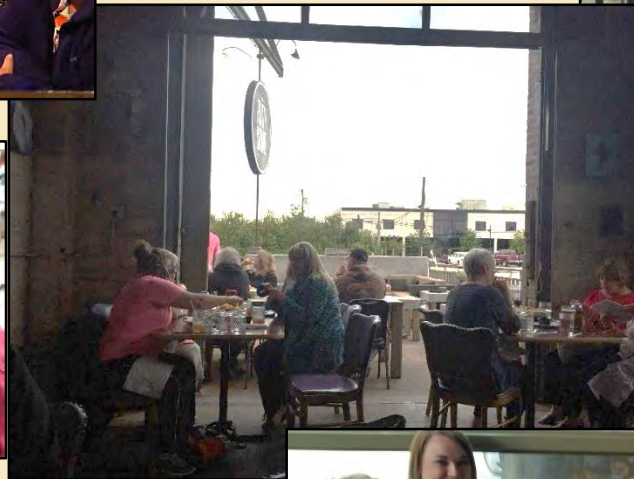
ICE BREAKERS

The Art of Thawing Groups



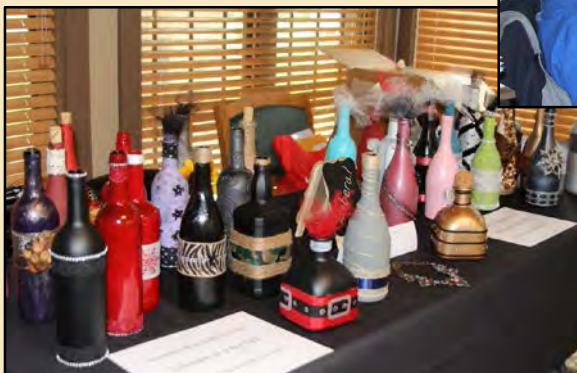
BLAST OFF!

With Education And FUN!

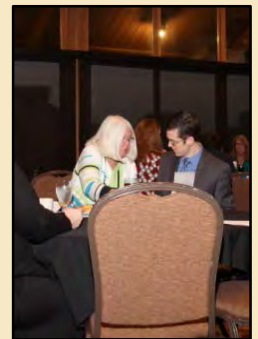




REGISTRATION, CLUB SALES & HOSPITALITY



BUSINESS MEETINGS





DOWN TIME





FUN PHOTO OPS





SPOTLIGHT

*A **BIG** Thank You to all our volunteers!*

Wendy Sparks	Region Director
Jonathan Slay	GAC *
Jill Klein	Finance-Chair
	Sponsorships
Val Bode	Registration-Chair
	Hospitality
Beth Johnson	Field Trips-Chair
	Hospitality
Kay Williams	Sponsorships-Co-Chair
	Registration
	Printing
	Decorations
Vicki Barnes	Printing-Chair
	Sponsorships-Co-Chair
	Program
	Decorations
Gay Wheeler	Program-Chair
	Field Trips
Dorothy Lenhart	Hospitality-Chair
Gaye Marrs	Entertainment-Chair
Beth Hesling	Field Trips
	Hospitality
Kris Russell	Registration
	Hospitality
Pam Sanders	Registration
Marilyn Trout	Entertainment
Kathy Farris	Entertainment

* General Arrangements Chair



IN APPRECIATION



Beth Johnson



Wendy Sparks



Beth Hesling



Pam Sanders



Kay Williams



Marilyn Trout



Vicki Barnes



Dorothy Lenhart



Gay Wheeler



Gaye Marrs



Jill Klein



Val Bode



Jonathan Slay

Not Pictured:
Kathy Farris, Kris Russell



A Special Thanks to Our Wonderful Sponsors

We appreciate your support

SILVER LEVEL



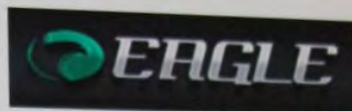
BRONZE LEVEL



Petro DE



CTKW
PETROLEUM
LAND SERVICES, LLC



COMSTAR
ADVISORS



Other Monetary, Service and SWAG Contributions

COMPANIES/ORGANIZATIONS:

ADDC Foundation
Imperial - Michael Evans
Litgistix - Chris Sloan
Müllerhaus - Douglas Miller
Rimrock Resource Operating
Stow's Furniture - Dan Crowder
Pottery by Jez - Jane Strutt
Garden Deva Sculpture Co.
CastleRock Financial Advisors
Tulsa Chamber of Commerce
Halliburton
Lindsey House
ONEOK
ONE Gas
Spears Travel

INDIVIDUALS:

Wendy Sparks
Jill Klein
Myke & Kay Williams
Vicki Barnes
Gaye Marrs
Marilyn Trout
Kathy Farris
Dorothy Lenhart
Jonathan Slay
Beth Johnson
Beth Hesling
Val Bode
Kris Russell
Pam Sanders



Thank you to all Region VI attendees
for making this event a huge success!



Thank you Tulsa!



Imogene Price

Enid Club

Oct 20, 1926 - Jan 26, 2017

In Loving Memory

Phyllis Anderson

Butler County Club

Jul 9, 1935 - Mar 11, 2017



Goodnight Tulsa!

